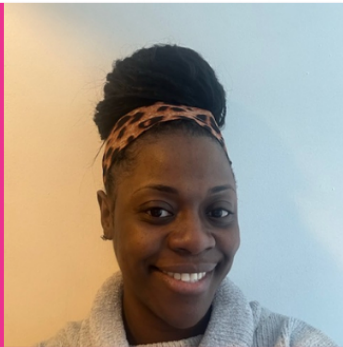


# AUGUST ADVOCACY IS ACTION

Advocacy is Action is NAFCC's annual campaign mobilizing family child care educators, allies, and advocates to drive real policy change during the Congressional recess. Beginning August 11, 2025, educators across the country will rise in unified action to protect and strengthen the future of family child care.

This year's campaign comes at a turning point. Family child care continues to be squeezed out of the system, despite being the backbone of early care in rural, multilingual, and underserved communities. With nearly 100,000 FCC programs lost since 2012, and more closures looming, the stakes are higher than ever.



FAMILY CHILD CARE EDUCATOR

## Latara Owens

Co-Owner and Co-Director of Little LUFF Childcare Inc.,  
Roslindale, Massachusetts

## Appointed Roles

- **Founder**, Bridge to LUFF (emerging nonprofit supporting paraprofessionals and childcare providers)
- Co-Owner & Co-Director, Little LUFF Childcare Inc. (licensed family childcare program)
- Mentor & Advocate for Family Child Care Providers in Massachusetts
- Member, WestZone Family Childcare Network
- Community Partner with Boston Public Schools & The Children's Trust
- Newly appointed State Representative for Massachusetts with NAFCC

## Impact

With over a decade of experience in family childcare, Latara has served infants, toddlers, preschoolers, and school-age children, supporting hundreds of families across Boston. Her program provides both traditional and evening care hours, summer camp, and community-centered events like the Back-to-School Block Party. Latara's initiatives have distributed fully stocked backpacks, tablets, and Chromebooks to children in underserved neighborhoods, directly reducing barriers for families.

## Advocacy and Leadership

- Community-Centered Leader committed to expanding equitable access to childcare, uplifting other providers, and mentoring paraprofessionals.
- Educational Background: Currently pursuing a Bachelor's degree in Child and Adolescent Learning and Development through UMass Amherst's University Without Walls, focusing on early childhood development and community-based leadership.
- Advocates Nationally and Locally: Builds partnerships with organizations such as The Children's Trust, Boston Public Library and Boston Public Schools to elevate family childcare voices.
- Policy Engagement: Actively raises awareness with city council leaders, local officials, and state-level partners to protect and strengthen family childcare as the backbone of early education.
- Committed to Equity and Access: Designs programs that respond to the needs of working families — including evening care and drop-in services for shift workers — while ensuring high-quality, home-based care remains sustainable and respected in the early education ecosystem.